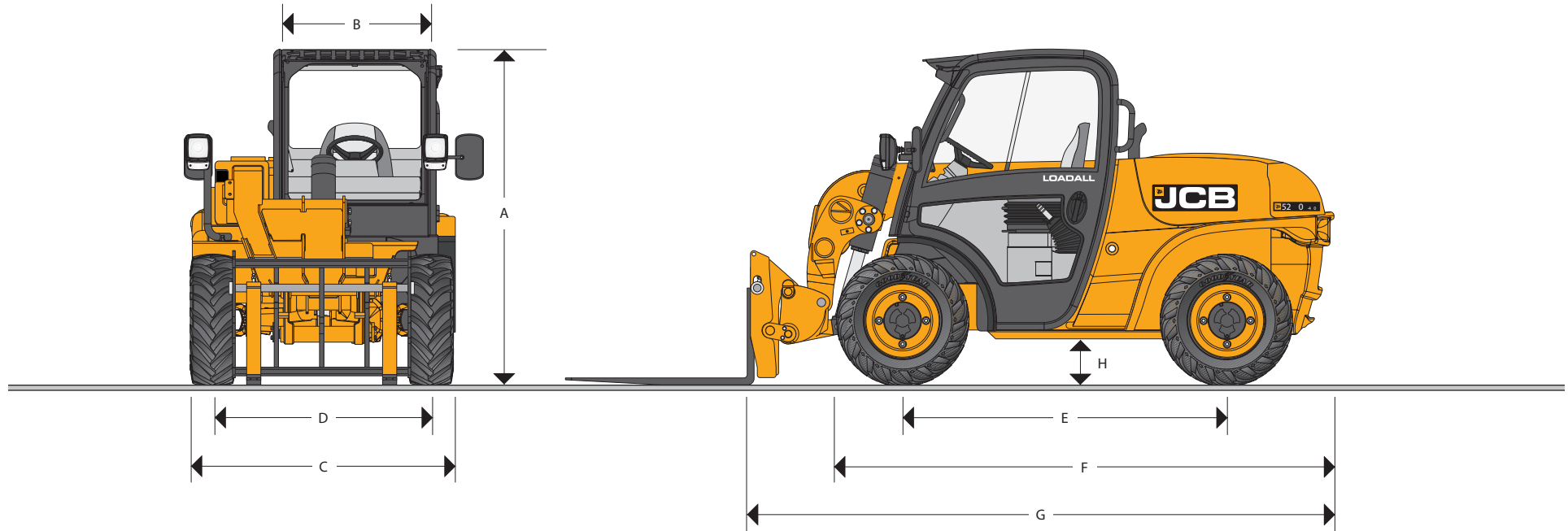




hire@pjpk.com
www.pjpk.com

MAX. PAYLOAD: 2.0 tonnes (4409lb) MAX. LIFT HEIGHT: 4 metres (13ft 1in) MAX. HOR SEPOWER: 37.5 kW (50hp)

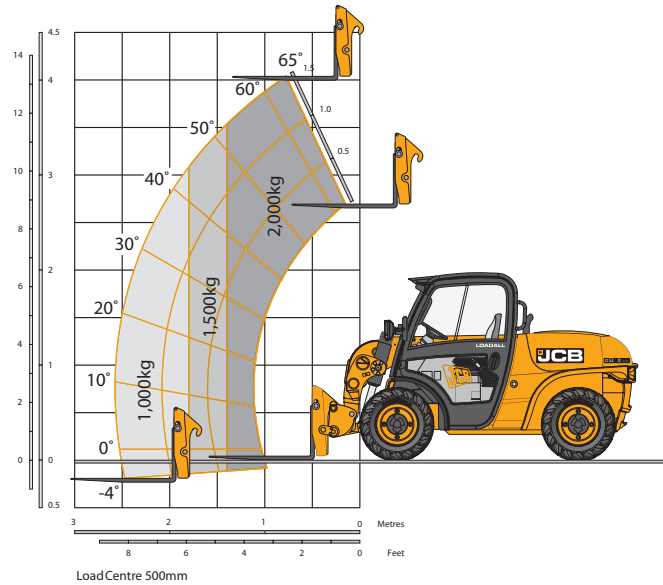


STATIC DIMENSIONS

Machinemodel	520-40
	m (ft-in)
A Overallheight	1.97 (6-6)
B Insidewidth of cab	0.92 (3-0)
C Width over tyres (min)	1.56 (5-1)
D Fronttrack	1.29 (4-3)
E Wheel base	1.90 (6-3)
F Overall length to front of tyres	2.92 (9-6)
G Overall length to front of carriage	3.38 (11-1)

Machinemodel	520-40
	m (ft-in)
H Groundclearance	0.27 (0-11)
Outer tum radius over tyres	3.05 (10-0)
Weight	kg (lb) 4400 (9700)
Tyres	10x16.5 12 ply
	12x16.5 10 ply
	11.5/80x15.3 8 ply

LIFT PERFORMANCE



LIFT PERFORMANCE

Machine Model	Compact Tool Carrier		Skid Steer Tool Carrier	
	520-40		520-40	
Lift capacity at full height	kg (lb)	2000 (4408)	2000 (4408)	
Lift capacity at full reach	kg (lb)	1000 (2204)	1000 (2204)	
Max. lift height	mm (ft-in)	4035 (13-3)	4025 (13-2)	
Reach at max. lift height	mm (ft-in)	890 (2-11)	815 (2-8)	
Maximum reach forward	mm (ft-in)	2590 (8-6)	2515 (8-4)	

LOADER PERFORMANCE

Machine Model	Compact Tool Carrier		Skid Steer Tool Carrier	
	520-40		520-40	
Shovel rated capacity	m ³	0.7	0.5	
Breakout force	kN (kg)	36 (3700)	33 (3390)	
	kg (lb)	3700 (8157)	3400 (7495)	
Dump height (max)	mm (ft-in)	3555 (11-8)	3500 (11-7)	
Dump angle at max height	degrees	33	40	
Load over height (max)	mm (ft-in)	4015 (13-1)	4015 (13-1)	
Rollback angle at ground	degrees	38	31	
Carrier rotation angle (total)	degrees	140	140	
Bucket width	mm (ft-in)	1750 (5-8)	1730 (5-7)	



ENGINE

		520-40
Model		PerkinsDiesel 404D-22
Displacement	litres	2.2
Fuel		Diesel
Cooling		Liquid
Bore	mm	84
Stroke	mm	100
Gross power @ 2800 rpm		
ISO 14396	kW (hp)	37.5 (50)
Gross torque @ 1300 rpm		
ISO 14396	Nm (lb/ft)	143 (105.47)
Emissioncertification		EC StageIIIA/USA EPA Tier 3
Engineoil serviceintervals		500 hours

TRANSMISSION

Hydrostatictransmission.

Closed loopvariabledisplacementpiston pumpand 2 speed bentaxis motor

Transmissioninchingfacility on operation of a combinèd inchingandbrakingpedal.

Front and rear drive axles: Epiçyclichubreductiontype with mid mountèd drop box. Permanent4WS and4WD.

– Rear axle oscillation.

– Optional front and rear limited slipdiff axles.

– Travel speed 20kph

BRAKES

Service brake: Hydraulicallyactivated, discbrake on the transmissionoutput shaft.

Parking brake: Manuallyoperated discbrake on the transmissionoutput shaft.

BOOM AND CARRIAGE

Boom is manufactured from hightensilesteel.

Low maintenance,hard wearingpads.

JCB tool carrier parallellift carriagewith manuabr hydraulicpinlockingaccepts forkframe with integral pallet forks and a wide range of attachments.

Compact Tool Carrier: Compact Loadallcompatibility.

Skid Steer Tool Carrier: Skidsteer universal compatibility hitch.

SERVICE CAPACITIES

	litres (UK gal)
Fuel tank	61 (13.4)
Hydraulic tank	33 (7.3)
Coolant	8 (1.8)

ELECTRICS

12 V negativeearth, 75 AH heavy duty battery. 65 ampalternator. Fullroad lightingdirectiveindicators, hazard warning.

HYDRA ULICS

		520-40
Machinemodel		520-40
Operatingsystem pressure	bar (psi)	250 (3626)
Flow at system pressure (@ 2800rpm)	ltr/min	60
Cycle times		seconds
Boom raise		5.8
Boom lower		4
Extend		5.7
Retract		4
Bucket dump		3.7
Bucket crowd		3.2

SAFETY CHECK VALVES

Fitted to crowd, extensionandlift rams.

CAB

Quiet, safe and comfortable cab conforms to RO PS ISO3471 and FOPS ISO 3449. Tinted glassall round with laminated front and roof screen. Front, rear screen wash/wipeand heater/screen demister. Opening door window Visualwarningsystem for coolant temperature, engineoil pressure, air cleaner, battery charge, transmissionoil pressure, engine temperature, fuel gaugeand houmeter.

Boom control lever incorporating forward/reverse switch. Throttle and brake pedals floor mountèd. Adjustable deluxe suspension seat with sidemountèd park brake lever. Automaticeye level audio-visual load moment indicator warningsystem receiving a signal from a load sensor on the rear axle.

This system continuously monitors the machine's forward stability and leaves the operator in control at all times.

STEERING

Full power hydrostaticsteering. Permanent4WS with 32° lock front and rear axles provides exceptional manoeuvrability.

OPTIONS AND ACCESSORIES

Options: Work lights, rotating flashing beacon, fire extinguisher, limited slipdiff front and rear axles, screen guard, sunblind, mechanical or hydraulic Compact tool carrier and Skid Steer tool carrier, battery isolator

Attachments: Contact your local dealer for details of the comprehensive range.